

SOPLAIR

COMPLETE INFLATABLE AWNING



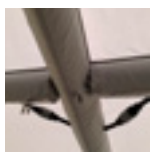
MALIA AIR

Soplair combines all the advantages of the traditional and inflatable awning and created the Malia Air model! It only requires a 2 step installation: slide it into the rail of your caravan and give it a few strokes of the pump to set it up.

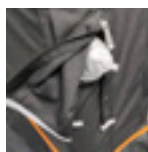


THE MANUFACTURER'S WORD

“ Speed and ease of assembly are the key words that characterise the Malia Air. ”



Inflatable structure in 1 point



Protected inflation valves



Double action hand pump included



Ladder elastics: heavy-duty floor ties



Internal mud flaps

Size		8	9	10	11	12	13	14	15	16	17	18
Depth	Developed	8,25 to 8,50	8,50 to 8,75	8,75 to 9,00	9,00 to 9,25	9,25 to 9,50	9,50 to 9,75	9,75 to 10,00	10,00 to 10,25	10,25 to 10,50	10,50 to 10,75	10,75 to 11,00
Depth 240 cm	Inflatable Frame	MALIA2408	MALIA2409	MALIA24010	MALIA24011	MALIA24012	MALIA24013	MALIA24014	MALIA24015	MALIA24016	MALIA24017	MALIA24018

KEY POINTS



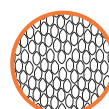
Armoured cap



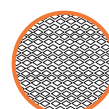
Detachable front and sides



Screen on side windows



PolyOne



Roof One



EasyAir

GENERAL		
Model	MALIA AIR	ANNEX
Reference	MALIA2408 to MALIA24018	810483
Compatibility	Caravan	Malia Air awning
Configuration	Full	nc
Armature	Inflatable in 1 point	Inflatable in 1 point
Size	8 to 18	W 225 x D 200 x H 180 cm
Developed (m)	8,25 to 11,00	nc
Depth (cm)	240	200
Mounting height (between X-X cm)	235-250	nc
Frame material	Inflatable structure	Inflatable structure
Armature diameter (mm)	120	100
Roof fabric	230 g/m ² polyester	220 g/m ² All Season polyester
Main fabric	220 g/m ² All Season polyester	220 g/m ² All Season polyester
FEATURES		
Ring diameter (mm)	7	nc
Shutters	No	No
Window	4 windows in the front	On all sides
Number of inflatable ridges	3 (Sizes 8 to 9) - 5 (Sizes 10 to 20)	nc
Number of inflatable masts	3 (Sizes 8 to 12) - 5 (Sizes 13 to 20)	nc
Mosquito net	In the lower part of the side windows (with protective crystal)	nc
Zip closure	Nylon on the front, windows and shutters, plastic on the sides	Made of plastic
Ventilation	Closable front ventilation	Mosquito net in the upper part of the inner chamber
Storm bracing	Yes	No
Flap	Choice of indoor or outdoor	choice of indoor or outdoor
Curtains	Yes	No
Lower body skirt	Yes	nc
Wheel covers	Yes	nc
Posts	Yes	Yes
Ladder elastic	Yes	Yes
Storage bag	Yes	Yes
Manual pump	Yes	No
Armoured cap	Yes	nc
Detachable front panel	Yes	Yes
Detachable side	Yes	No
Partition wall	No	Yes
OPTIONS		
REFERENCE		
Appendix	810483	nc
Inner chamber	included with 810483	Included with floor mat
Velum	No	No
Frontage advance	No	No
Wall for facade overhang	No	No
Curtains for overhanging walls	No	No
Side advance	810476	nc
Black storm strap	811632	nc
Black storm strap	810479	nc
2-band lighting kit	855600	nc
Extension kit for 2 additional ramps	855601	nc
Floor mats	No	No
Front balcony bar	855573 à 855576	nc
Side balcony bar	855575	nc
Anti-water pocket bar	No	nc
Rear support bars	nc	nc
Suction pads	nc	nc
Drilling tool	nc	nc
Eva pad	nc	nc
Universal mounting kit	nc	nc
Independent awning kit	nc	nc
Electric pump	855480	855480